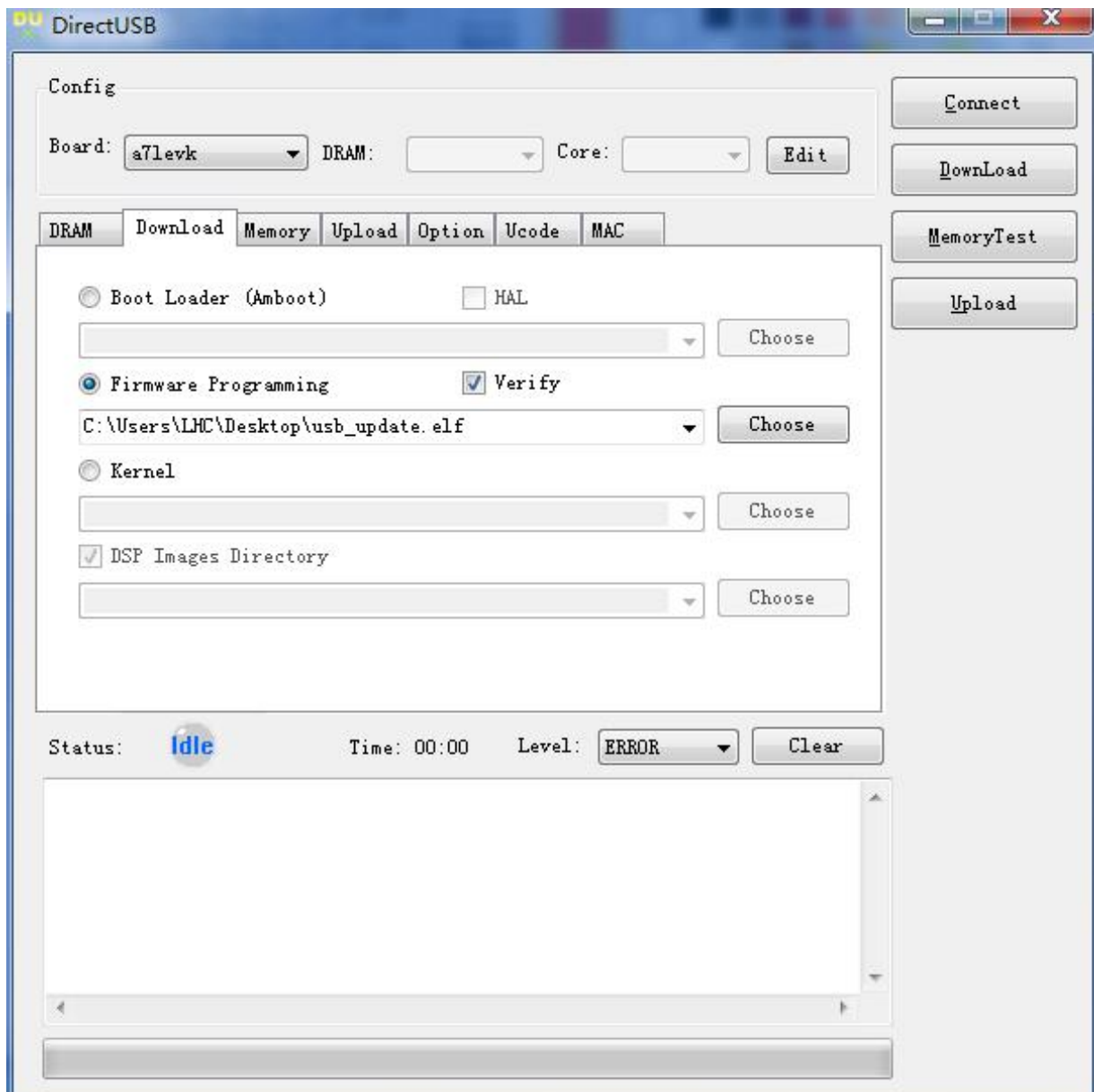


Z-Edge Z3 Firmware Update Guide for Solving Blue Screen Issue

1. Install the software: Download the attachment and unzip it to current file folder. Double click DirectUSB-2.2.28.0-Setup. Complete the installation according to the prompts. During installation, there's a install driver prompt while install the software. Please allow the driver installation since it's very important to update. Please be patient to wait before the drive installation completed.

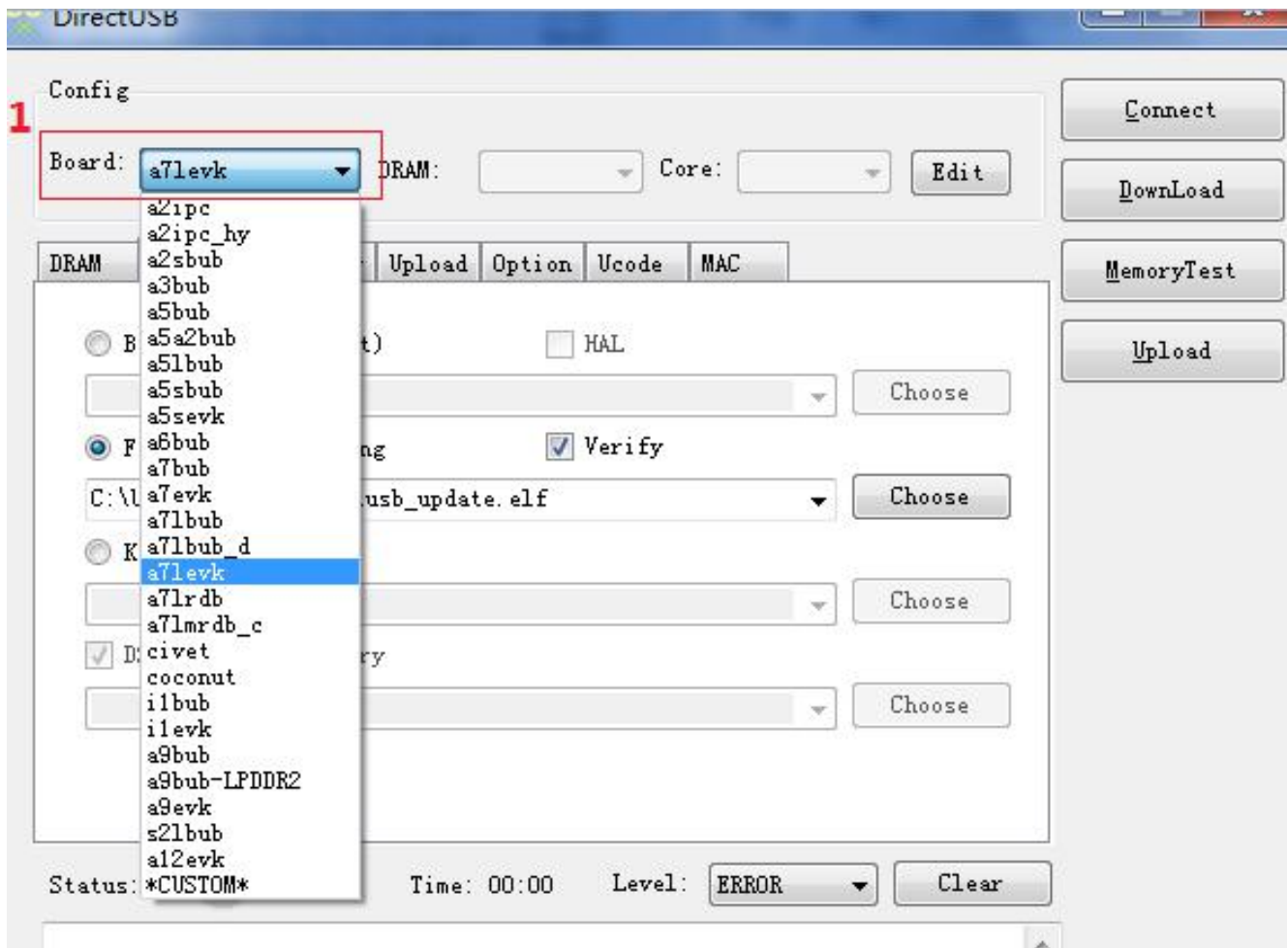
Note: The update should be on a Win 7 computer. Please kindly ask your friends or colleagues if you don't have one.

2. After complete the installation, find the file folder "Ambarella" and click the "DirectUSB" as the picture below. If the file folder "Ambarella" is not available, please kindly repeat the installation in the step 1. The interface is as below:

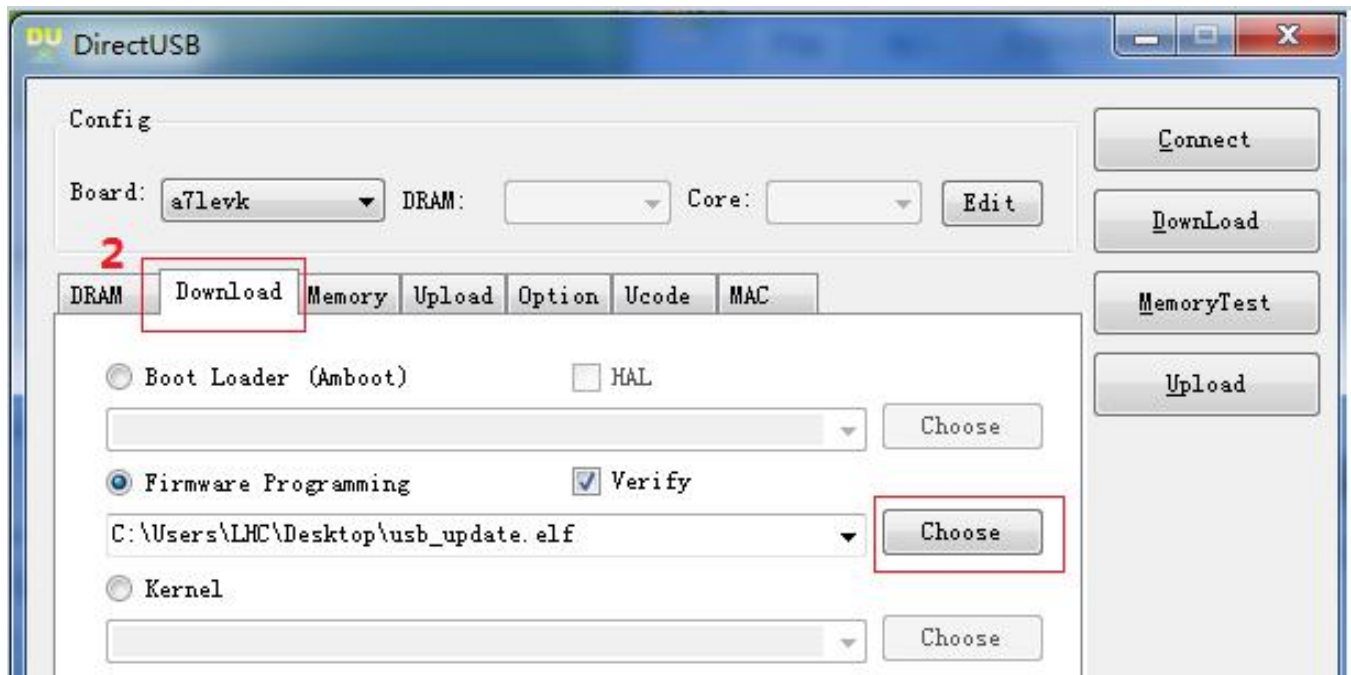


3. Update

- ① Select the “a7levk” in the Board as the picture below.

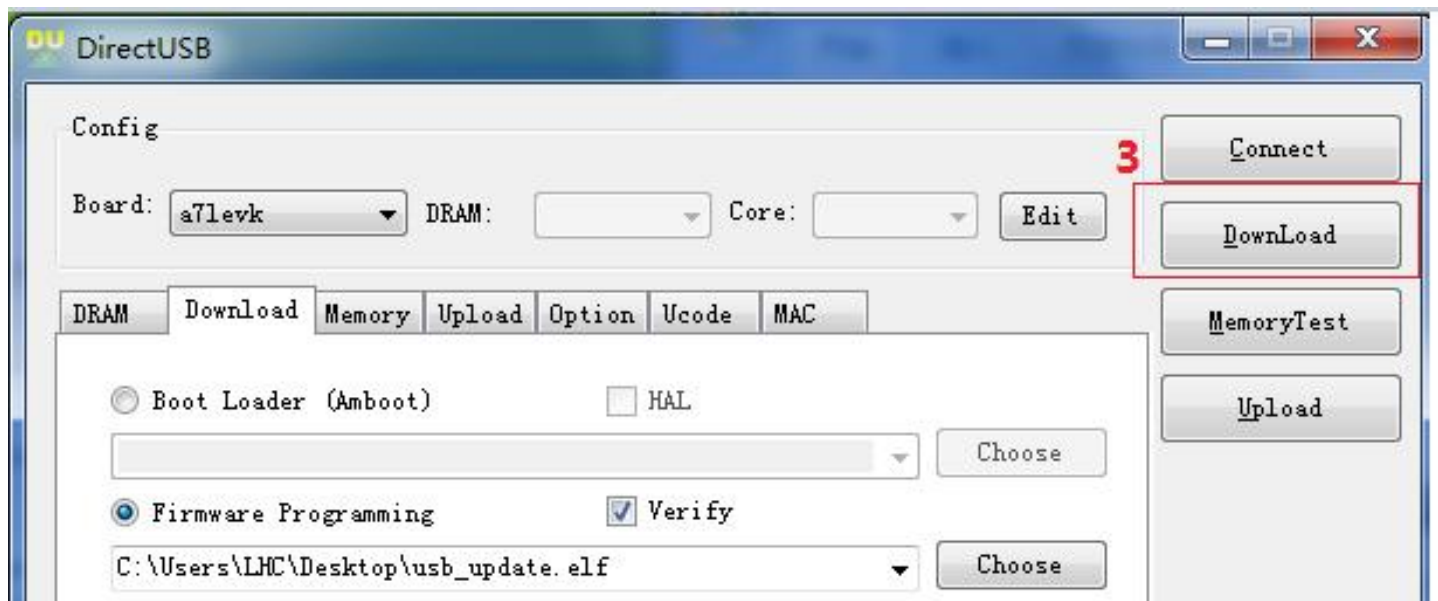


- ② Select Download as below, then find, select and save the “usb_update.elf” file in the Choose tab as below. The “usb_update.elf” file is in the attached file folder.

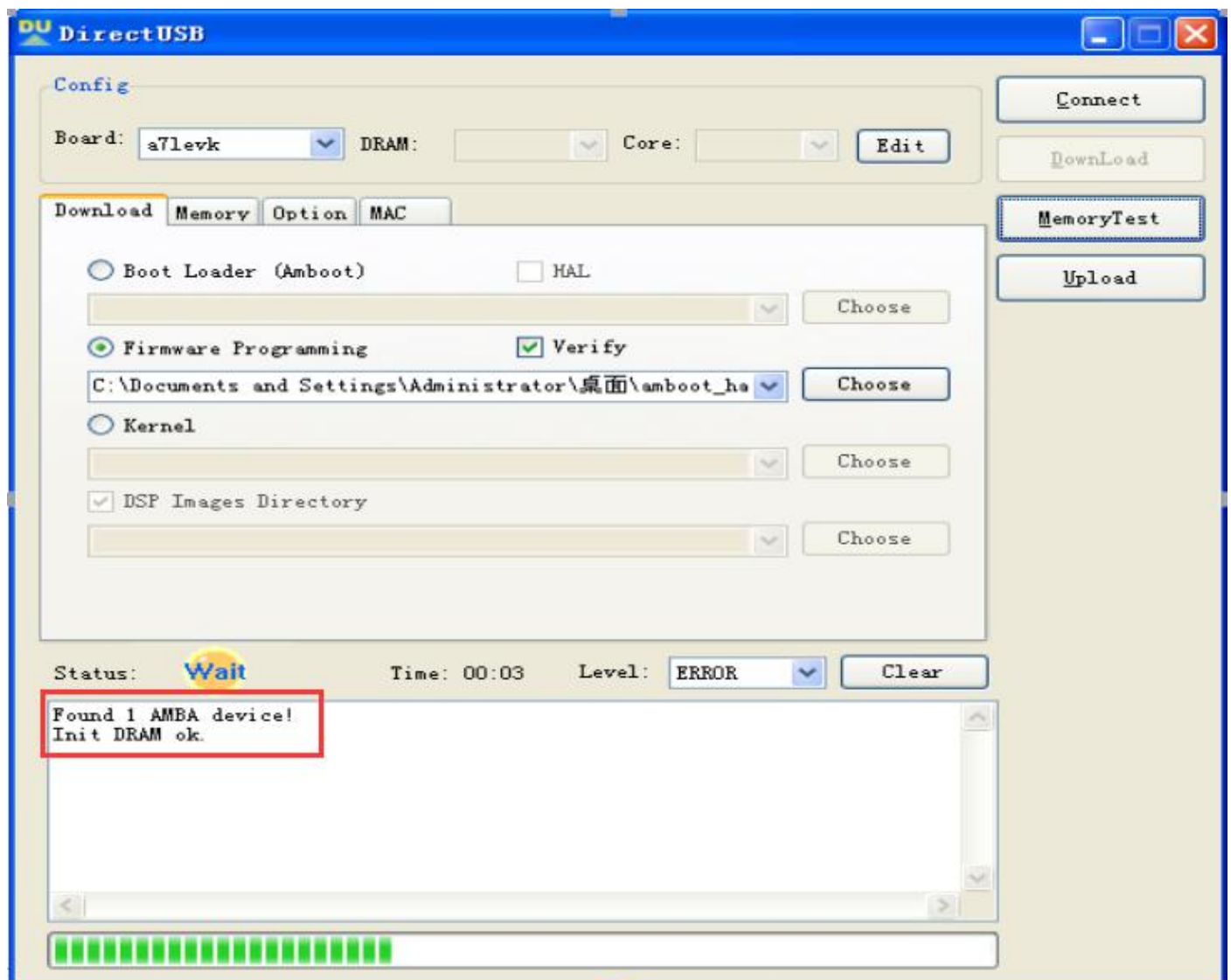


- ③ Please update the firmware exactly as the following steps.
- Firstly please make sure the dash cam is turned off.
 - Plug the short data USB cable to computer. If it's desktop computer, please plug the USB cable to port in the back of mainframe. Please make sure that the cable is unplugged from the dash cam at this step.

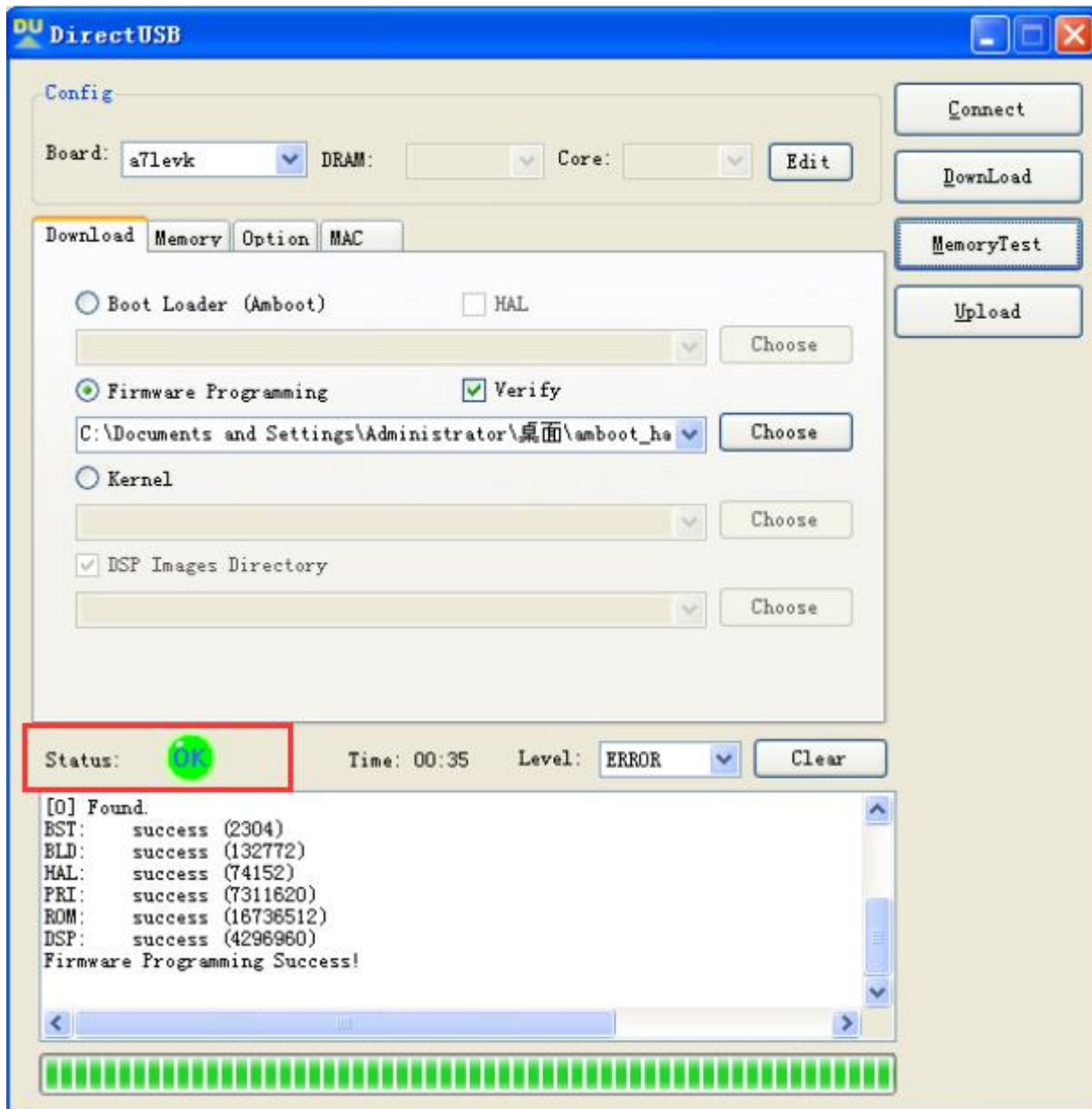
- c. Pick up the dash cam and press the DOWN “-” button. Please press the button all the time and don’t release the press.
- d. Plug the Micro USB cable to the dash cam.
- e. Click the Download button in the “DirectUSB” as below.



- f. When the drive installed well, the software will show “Found 1 AMBA device”



g. Please wait till the Status display OK which means the update has completed.



h. Please **RESET** the dash cam with a paper clip before turning on the dash cam.